



LIVE. SHARE. ENJOY.
ACCOMMODATION FOR STUDENTS AND YOUNG PROFESSIONALS

CONTENTS

About London Nest.....	03
Accommodation Map.....	04
Testimonials.....	06
Residences.....	07
The Curve.....	08
Spring Mews.....	09
The Collective Old Oak.....	10
Chapter White City.....	11
The Stay Club Camden.....	12
Hawley Crescent.....	13
Bloomfield Court.....	14
Chapter King's Cross.....	15
Fulham Palace Studios.....	16
Lightfoot Hall Chelsea.....	17
Testimonials.....	18
Flat Shares.....	19
Fortess Road.....	20
Uxbridge Road.....	21
Book with Us.....	23
Contact Us.....	24



LIVE. SHARE. ENJOY.

Coming to London starts with a dream.

People come to London for a range of reasons, including study, work, a change of scenery, or just a new life experience. Although you have the opportunity to enjoy the benefits of living in London, living in such a large city can bring about many challenges. London Nest is here to minimise those challenges. London Nest helps provides students and young professionals with the best accommodation and standard of London life. You are able to achieve all your dreams and possibilities here, with London Nest.

Our dedicated team are here to help, as we understand how hard it is to find the perfect place to match all of your interests and emotions. The up-side to this is that we also know the joys that the London experience can bring. This is why London Nest strives to provide you with the most appropriate accommodation for your situation. We can make a difference; we create foundations to transform peoples' lives.

As part of our service, we work directly with students, young professionals providing them with excellence. We also work with many dedicated language schools, education providers, and agents, guiding clients and helping them find their perfect accommodation that suit the needs of their students.

MEET THE TEAM



**ALEX
USELLI**
MANAGING
DIRECTOR



**RAJ
TOOR**
FINANCE
DIRECTOR



**CARLA
FERRERO**
COMMERCIAL
MANAGER



**ANGELA
DE FREITAS**
SALES
MANAGER



**CASSANDRE
MAES**
KEY ACCOUNTS
EXECUTIVE



**LAURENCE
GIRARD**
KEY ACCOUNTS
EXECUTIVE



**SAIFUR
RAHMAN**
SALES
EXECUTIVE



**BENJAMIN
SERUMAGA**
SALES
EXECUTIVE



**PAULA
CAYON**
OPERATIONS
EXECUTIVE



**CAROLINE
OTU**
DIGITAL MARKETING
EXECUTIVE



**THUY
NGUYEN**
GRAPHIC
DESIGNER



THE COLLECTIVE OLD OAK



CHAPTER WHITE CITY



UXBRIDGE ROAD



LIGHTFOOT HALL CHELSEA



FULHAM PALACE STUDIOS



FORTRESS ROAD



BLOOMFIELD COURT



THE STAY CLUB CAMDEN



CHAPTER KING'S CROSS



HAWLEY CRESCENT



THE CURVE



SPRING MEWS



“

I have worked with the company for 7 years, and they have provided an outstanding level of professional service. I recommend them highly.

- Harry Angelides, Landlord

Booked my accommodation with London Nest and I've had their attention on every request I made, with fast and clear answers and arrangements.

- Lucia Garia, Student

London Nest has provided us with many happy experiences for our customers, and the staff and admin members are always attentive and available. Well done!

- Ophelia Bonelli, Tti School of English

The team is very helpful and always friendly. They really help build a community in the accommodations, turns my room into a home.

- Lisa Guldenaar, Influencer

Our students are happy for the dedication, advice and great offers they get from London Nest. Happy to continue working with you!

- Ange Nkurunziza, INSEEC

Quick response & happy to answer my millions of questions. Helped out in an out-of-hours crisis too. Efficient, friendly and a pleasure to work with!

- Sophie Sheppard, Student

”

RESIDENCES



RESIDENCES



THE CURVE



LONDON NEST RECOMMENDS GREAT LOCATION AND FANTASTIC VALUE



CENTRAL LONDON: ZONE 1

Located in the heart of zone 1, The Curve is our most popular residence with a range of en-suite and studio rooms. There are 200 rooms all year round and 250 rooms during the summer. The Curve's on-site facilities include a gym, a games room, 2 communal areas with TVs, comfortable sofas, a quiet study room, a laundry room and a brand new café.

There are excellent transport links for students to travel with ease around London. The Curve is just a 5-minute walk to Brick Lane where there is a fantastic market for students to enjoy, and a 10-minute walk from London's main monuments like Tower Bridge and The Tower of London.

FACILITIES & AMENITIES



Weekly cleaning



Ben linen



2 TV rooms



Café on-site



Games room



Social events

LOCAL AREA

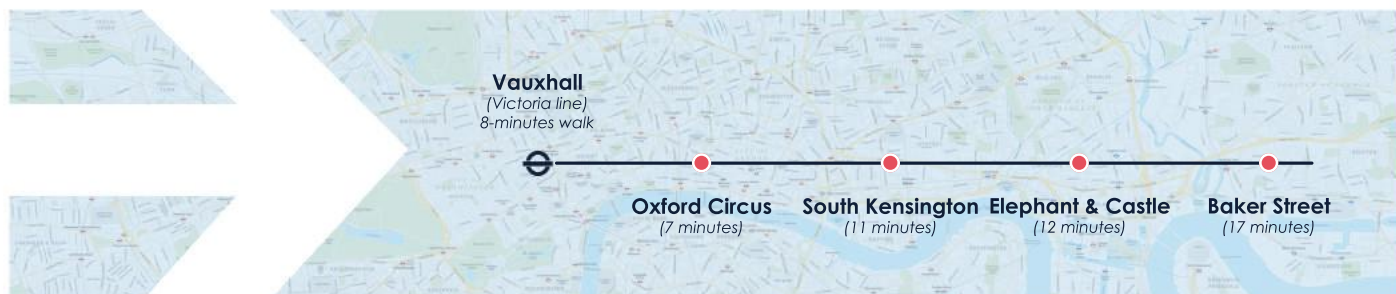


Shoreditch: View the lovely stalls in Brick Lane Market



Tower Bridge: Take a selfie on this beautiful landmark, just minutes away from The Curve

SPRING MEWS



LONDON NEST RECOMMENDS EXCELLENT LOCATION - ICONIC LONDON LANDMARKS



En-suite room



FACILITIES & AMENITIES



Free
WiFi



Communal
area



Double
beds



Gym
on-site



Outdoor
space



Swimming
pool

CENTRAL LONDON: ZONE 1

Spring Mews is located in Central London. It consists of single en-suite rooms and stunning facilities like an indoor swimming pool, communal area with a cool replica of an Underground train carriage and a colourful London-themed social area. Students are also provided with a communal kitchen and a lounge.

The residence is located near Britain's popular universities such as University of London, University of Roehampton and King's College. Students can experience the ethos of London by having a coffee in Kennington's independent shops, and cafés, enjoy the exciting nightlife by dancing at the Ministry of Sound Club or view Britain's sporting culture at the nearby Oval cricket ground.

LOCAL AREA



Westminster: Discover London's most iconic landmarks in just a 20-minute walk



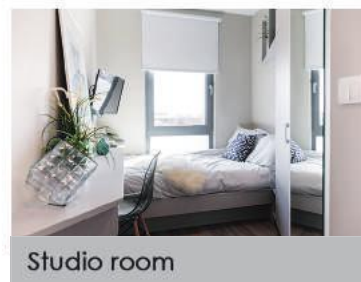
Tate Britain: Visit historic British Art dating back to the 1500s



THE COLLECTIVE OLD OAK



LONDON NEST RECOMMENDS THE CO-LIVING EXPERIENCE



NORTH WEST LONDON: ZONE 2

The Collective Old Oak is the world's largest co-living space. It offers a range of stunning communal areas such as a sizzling Spa & Sauna, a Cinema room, Secret Garden, a roof terrace, communal kitchens, laundry room, and a library with various study areas.

Join The Collective Old Oak community with enjoyable weekly events, perfect for young professionals who want to experience the vibrancy and modernity in their environment. Kick-start your career in London, and develop virtuous friendships. The residence is just a 5 minute walk from Willesden Junction station with easy access around London via Overground and Underground train services.

FACILITIES & AMENITIES



Free
WiFi



Games
room



Sauna
& spa



Cinema
room



Secret
Garden



Social
events

LOCAL AREA

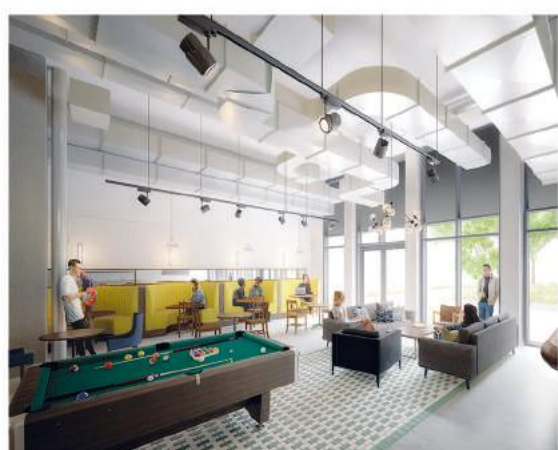


Westfield Shopping Centre: Luxurious brands & fashion outlets in Shepherd's Bush



Wembley Stadium: The largest stadium in the UK, showing English football & live concerts

CHAPTER WHITE CITY



LONDON NEST RECOMMENDS

EASY ACCESS TO ANYWHERE IN LONDON



FACILITIES & AMENITIES



WEST LONDON: ZONE 2

Chapter White City is a brand-new and exciting property based in West London and consists of both fun and useful facilities. These include a study area, a gym, and a social space. They offer a fantastic range of bronze, silver, gold and platinum studios, which are easily adaptable to your budget.

It is an easy 20-minute journey from Chapter White City to the popular White City Westfield Shopping Centre where you can enjoy many shopping malls and restaurants.

LOCAL AREA



Electric Cinema: One of London's oldest cinemas with luxurious leather armchairs



Portobello Market: The world's largest antiques market with over 1000 attractions



THE STAY CLUB CAMDEN



LONDON NEST RECOMMENDS
CAMDEN MARKET AND GREAT NIGHTLIFE



Single studio room



Twin studio room

CENTRAL LONDON: ZONE 2

The Stay Club Camden is a modern and quirky student residence located in the heart of Camden Town. Consisting of both single and twin studios, the residence caters to all of your student needs. Facilities include a communal lounge area with a smart TV, a café, a pool table, a laundry room, a relaxing garden space and more.

Discover Camden, one of London's most stylish towns, located just a few minutes from the residence. Students can enjoy the live performances in The Jazz Café or visit the many shrines dedicated to the late Amy Winehouse and visit the Roundhouse, renowned for its great music.

FACILITIES & AMENITIES



Free
WiFi



Ben linen
& towels



24-hour
reception



Café
on-site



Outdoor
space



Social
events

LOCAL AREA



Camden Market: Vintage treasures, fashion outlets, amazing street food and gigs



Camden Lock: Enjoy a refreshing drink in the sunshine with your friends

HAWLEY CRESCENT



LONDON NEST RECOMMENDS URBAN VIBES IN CAMDEN TOWN



Studio room



Studio room

FACILITIES & AMENITIES



Weekly cleaning



Free WiFi



Large beds



Sky TV in lounge



Private kitchen



Bike storage

CENTRAL LONDON: ZONE 2

Hawley Crescent is any student's dream accommodation. It is a newly refurbished student residence located in the heart of the popular Camden Town. The rooms are contemporary, stylish and consist of large and luxurious beds, en-suite bathrooms, you have a TV in your room, a private kitchen area, sky lounge area and a rooftop terrace with a beautiful view of London.

There is also a hospitality team available to help with any enquiries throughout the day to advise students on all the fun things to do in Camden Town. The residence is located near London's popular universities such as Central Saint Martins, University College London and more.

LOCAL AREA



Regent's Canal: Grab a drink and enjoy the scenery riding through the canal



Regent's Park: Have a picnic in one of the most beautiful parks in London





BLOOMFIELD COURT



LONDON NEST RECOMMENDS
EASY ACCESS TO LOCAL BARS & RESTAURANTS



En-suite room



NORTH LONDON: ZONE 2

The residence provides both en-suite and studio rooms with plenty of storage space and study areas. The management team hosts and organises regular events for students to socialise and meet new people. The building is also covered with 24-hour security cameras and a secure entry system.

Close to Holloway Road and Archway Underground stations, residents can get to and from university with ease. Nearby there is the Emirates stadium which is the home of Arsenal F.C. with a capacity of nearly 60,000, it is the third-largest football stadium in England. There is also King's Cross nearby with a range of delicious food stalls and shops.

FACILITIES & AMENITIES



Free
WiFi



Communal
area



Large
beds



Laundrette
on-site



24-hour
CCTV



Bike
storage

LOCAL AREA

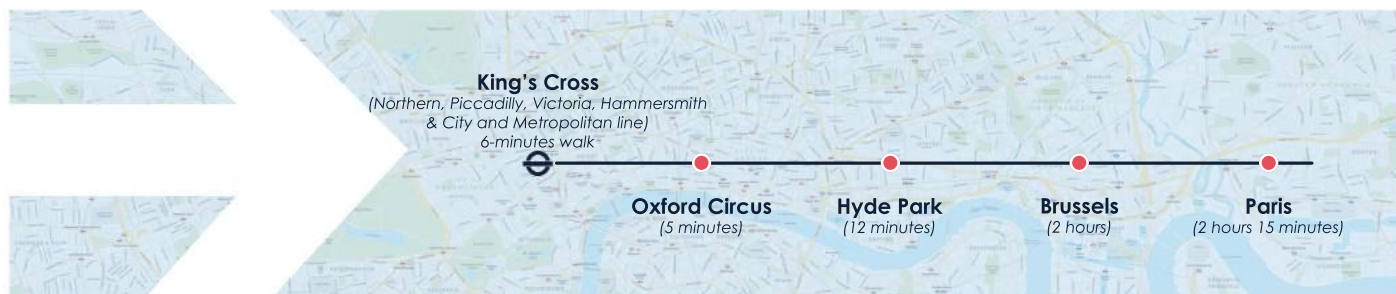


Finsbury Park: Beautiful park, perfect for a picnic with friends

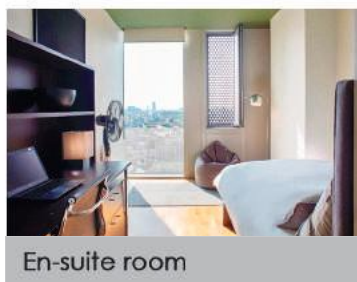


Emirates Stadium: Home of Arsenal F.C

CHAPTER KING'S CROSS



LONDON NEST RECOMMENDS LUXURIOUS ACCOMMODATION & GREAT LOCATION



FACILITIES & AMENITIES



Weekly
cleaning



Study
area



Outdoor
space



Gym
on-site



Games
room



Screening
room

CENTRAL LONDON: ZONE 1

Enjoy the contemporary theme that Chapter King's Cross has to offer. You are in the midst of exciting events and views of the buildings across London. These rooms come with 2 single beds, twin and single en-suites.

Being situated in Zone 1, the residence is located near numerous bars, restaurants, cafés and many other places to visit. During London's more enjoyable weather, you can enjoy a short walk to Camden Town, Regent's Park, Clerkenwell and Fitzrovia, students have access to London's most beautiful areas. View Granary Square when the colourful water fountains go off or swing in the giant colourful birdcage lit at night.

LOCAL AREA



Granary Square: Canal-side the heart of King's Cross, with local bars & restaurants



St. Pancras International: Travel to Paris or Brussels from the Eurostar in St. Pancras



FULHAM PALACE STUDIOS



LONDON NEST RECOMMENDS FULHAM PALACE ROAD & STAMFORD BRIDGE



Studio room



WEST LONDON: ZONE 2

Fulham Palace Studios is a modern residence with a selection of single and twin studios. You are provided with high-quality rooms, a private bathroom, kitchenette, large comfortable beds, a mini-combi oven and a desk area. There is free WiFi, bike storage, a TV room and a laundry room. There is also CCTV with a secure electronic entry system.

Fulham Palace Studios is located just 10-minutes away from the iconic landmark, Hammersmith Bridge, where you can enjoy a lovely walk with your friends along the River Thames. The residence is also close to Chelsea Football Club so you can enjoy a fun, sporty, and unforgettable experience and get into Britain's huge football culture.

FACILITIES & AMENITIES



Free
WiFi



TV
room



Double
beds



Laundrette
on-site



24-hour
CCTV



Bike
storage

LOCAL AREA



Hammersmith Bridge: Stroll along the River Thames and enjoy the amazing view



Hammersmith Apollo: Amazing nightlife and awesome live concerts

LIGHTFOOT HALL CHELSEA



LONDON NEST RECOMMENDS

LOCATION, LOCATION, LOCATION



FACILITIES & AMENITIES



Free
WiFi



Communal
area



24-hour
security



Communal
kitchen



24-hour
CCTV



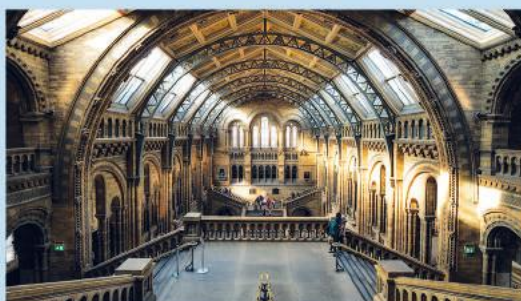
Laundrette
on-site

CENTRAL LONDON: ZONE 1

Lightfoot Hall residence is located in the heart of Chelsea, which is frequently televised due to its fashionable locations, bars and boutiques. The twin en-suite rooms have a TV, a fridge freezer and a microwave. There are two large common rooms, a laundry facility, and a large communal kitchen with sinks, hobs, ovens and cabinets.

Located between South Kensington station and Sloane Square Underground stations, students can travel and explore London with ease. Lightfoot Hall Chelsea is located on King's Road, one of the most fashionable locations. There is a huge range of shops with well-known brands which dominate large areas of the shopping street.

LOCAL AREA



Natural History Museum: Seek an adventure back in time with dinosaurs



King's Road: One of the most fashionable locations in London





I had a great experience with London Nest. The sales executive was always an email away and ready to answer any questions no matter how big or small. He was patient and thanks to his service, I now have a place in London and the process to find it and lock it down went smoothly. Would recommend London Nest to students!

- Crystal Lugo, Student

I have been working with London Nest for the past 3 years and I can only say that they are the best team I came across so far. The Key Accounts Executive is really professional and always helpful as well as the rest of the team. I really enjoy working with them!

- Eleonora Corsini, Malvern House

I am very happy with London Nest service as they always quickly and efficiently help me with my questions and problems and they are very friendly people. Thanks to all.

- Emine Kaplan, Student

Staffs are kind and handfull! Appreciate it! Thanks for their detailed explanation and quick email reply!

- Au Hoi Yiu, Student



FLAT SHARES



FLAT SHARES



FORTRESS ROAD



LONDON NEST RECOMMENDS COLOURFUL VIEW OF PASTEL TERRACED HOMES



CENTRAL LONDON: ZONE 2

Fortress Road flat share includes 4 bedrooms all equipped with double beds, a wardrobe and a desk with a chair perfect for private study. There is a shared bathroom and an extra toilet room. There is also a fully equipped kitchen with a dining area and a TV to enjoy a relaxing and sociable experience.

Students can get to Parliament Hill which is just 7 minutes away and enjoy the stunning views over London's scenic skyline. Students can explore the Highgate Village, enjoy some team building activities at The Escape Game in South Kentish Town or visit London Zoo and view the huge range of exotic animals.

FACILITIES & AMENITIES



Free
WiFi



Communal
bathroom



Separate
toilet



Communal
kitchen



Outdoor
space



Washing
machine

LOCAL AREA

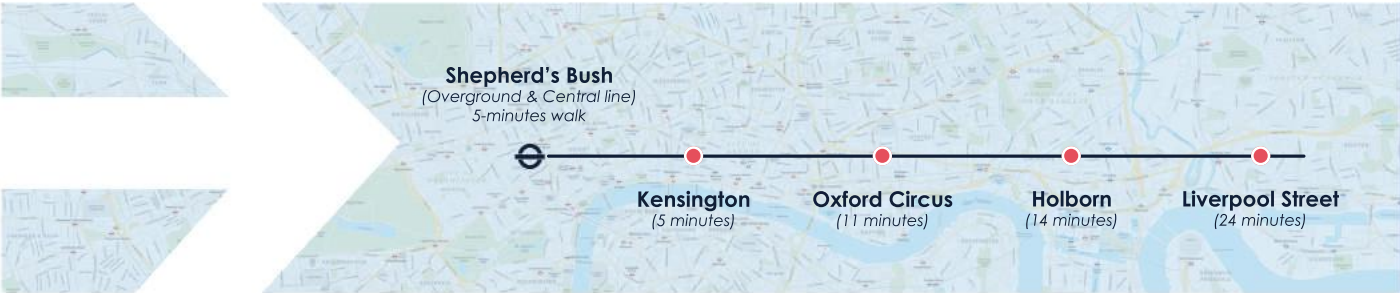


Pastel homes in Falkland Road:
Lovely and colourful terraced housing



The Assembly House Pub:
Classic English pub, great to hang out in!

UXBRIDGE ROAD



LONDON NEST RECOMMENDS
WESTFIELD SHOPPING CENTRE & LOCAL CINEMA



Double room



Twin room

FACILITIES & AMENITIES



Free
WiFi



Communal
bathroom



Separate
toilet



Communal
kitchen



Outdoor
space



Washing
machine

WEST LONDON: ZONE 2

Uxbridge Road flat share consists of 3 rooms: a single room, a double room, and a twin room on each floor. There are shared kitchens, laundry facilities and bathrooms with an extra toilet room. The flat share is located in a fantastic area, local to a huge range of stores, a cinema and shopping centre in just under a 10-minute walk away.

Located in the heart of Shepherd's Bush area students can travel to Westfield shopping centre, and view Kensington Gardens which has a lovely, natural scene of botanics where students can enjoy a nice little picnic.

LOCAL AREA



Westfield Shopping Centre: Paradise for shopaholics - local fashion outlets



Kensington Gardens: Take a stroll in one of London's gardens





HOW TO BOOK

DISCOVER

A wide range of properties all around London just for you.

Have a look through our site:
www.londonnest.com

GET IN TOUCH

Contact our multi-lingual, dedicated and friendly team.

We're here to help with any issues before & during your stay.

BOOK WITH US

Follow our easy booking process without a hassle.

Connect with us on social media and stay in touch.

@londonnestltd





GET IN TOUCH WITH US

Tel: +44 (0)20 7697 0009
E-mail: info@londonnest.com
Web: www.londonnest.com

