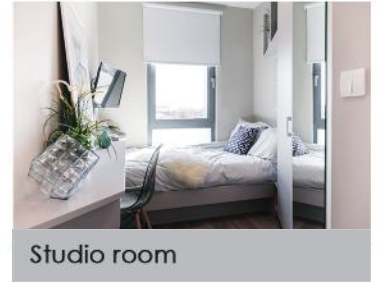




# THE COLLECTIVE OLD OAK



## LONDON NEST RECOMMENDS THE CO-LIVING EXPERIENCE



## NORTH WEST LONDON: ZONE 2

The Collective Old Oak is the world's largest co-living space. It offers a range of stunning communal areas such as a sizzling Spa & Sauna, a Cinema room, Secret Garden, a roof terrace, communal kitchens, laundry room, and a library with various study areas.

Join The Collective Old Oak community with enjoyable weekly events, perfect for young professionals who want to experience the vibrancy and modernity in their environment. Kick-start your career in London, and develop virtuous friendships. The residence is just a 5 minute walk from Willesden Junction station with easy access around London via Overground and Underground train services.

## FACILITIES & AMENITIES



Free WiFi



Games room



Sauna & spa



Cinema room



Secret Garden



Social events

## LOCAL AREA



**Westfield Shopping Centre:** Luxurious brands & fashion outlets in Shepherd's Bush



**Wembley Stadium:** The largest stadium in the UK, showing English football & live concerts